



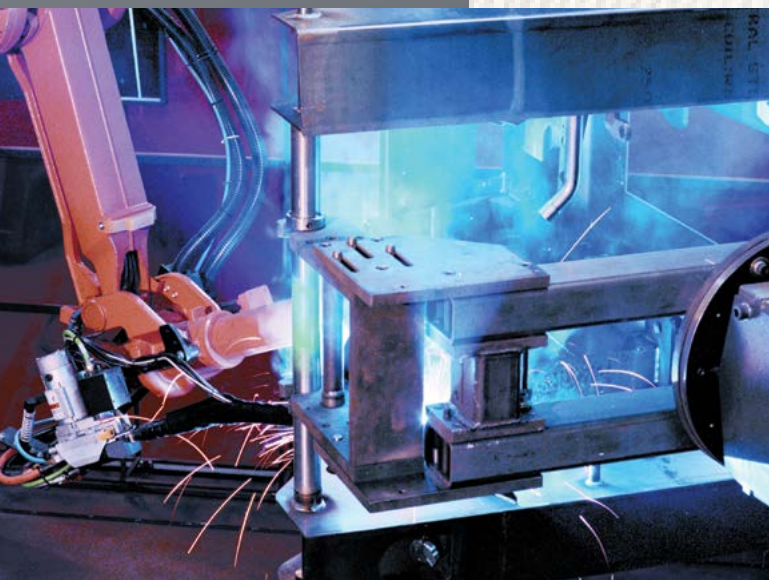
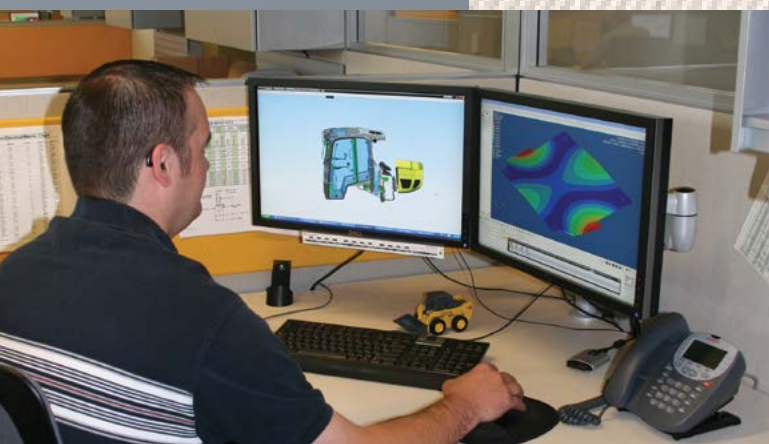
TRACK LOADERS

RADIAL-LIFT



1650RT ▲ 1750RT NXT3 ▲ 2100RT NXT3

A LEGACY OF INNOVATION



**WHAT BEGAN IN THE 19TH CENTURY AS AN
AGRICULTURAL IMPLEMENT MANUFACTURER
HAS GROWN INTO A 21ST CENTURY EQUIPMENT
POWERHOUSE - MUSTANG COMPACT EQUIPMENT.**

Known in the early years as the Owatonna Manufacturing Company, Mustang was among the first to make what is known today as the skid steer loader. Since that time, Mustang has combined old-school experience with innovative processes to offer one of the broadest lines of compact equipment available today.

MUSTANG. THE ORIGINAL WORKHORSE.



BLAZING A NEW TRAIL

Since breaking into the track loader market in 2001, Mustang has learned a thing or two about what it takes to be an industry leader. Combine this expertise with input from some of the market's heaviest track loader users, and you get the RT Series Track Loaders from Mustang.

With many industry-exclusive features, including the patented IdealAccess™ Fold-Up Door and IdealTrax™ Automatic Track Tensioning System, the 1650RT, 1750RT NXT3 and 2100RT NXT3 will blaze a new trail in the track loader market.

IdealTrax™

IdealAccess™



1650RT



**1750RT
NXT3**



**2100RT
NXT3
MUSTANG**

PERFORMANCE

▲ POWER and ▲ PERFORMANCE

ALL-NEW 1650RT: THE GAME CHANGER

IDEALTRAX™ AUTOMATIC TRACK TENSIONING SYSTEM

Eliminate weekly tension checks and costly track replacements with the IdealTrax™ system. Tracks are automatically tensioned when the engine is started and during operation. Tension is released when the engine is shut off.

HIGH BREAKOUT FORCES

TILT	1919 kg
LIFT	2295 kg

TIER IV ENGINE

POWER	69.9 hp (52 kW)
TORQUE	241Nm

CHOICE OF CONTROLS

Choose between pilot joystick, T-bar, or hand/foot controls to suit operator preference. A conversion kit is available for the pilot dual-hand control system.



RATED OPERATING CAPACITY

1650RT	794 kg
--------	--------





ADAPTED SKID LOADER CHASSIS

Custom built to aid in superior weight distribution, which enhances stability, grading, tractive effort, and ride control.



COUNTERWEIGHT/BUMPER

Gain extra tipping capacity while offering increased rear protection.

GROUND CLEARANCE

1650RT 185 mm



MACHINE WIDTH OPTIONS

The 1650RT has a width of 1816 mm when outfitted with wide tracks and 1727 mm with the narrow track option.

For applications needing a more compact machine, a narrow frame is available to special order with a 1676 mm overall width.

LIFT HEIGHT

1650RT 3251 mm

OPTIMIZED RADIAL LIFT ARM

Durable design provides increased strength and up to 3251 mm of lift height - higher than any competitor in their respective weight class.



PERFORMANCE

▲ **POWER** and ▲ **PERFORMANCE**

ROUGH GROUND - YOU HAVE MET YOUR MATCH

INCREASED BREAKOUT FORCES

Enhanced breakout forces on the NXT3 models make these machines your greatest allies on the job.

	TILT	LIFT
1750RT NXT3	2429 kg	2275 kg
2100RT NXT3	3008 kg	2940 kg

IDEALTRAX™ INDUSTRY-EXCLUSIVE AUTOMATIC TRACK TENSIONING SYSTEM

Eliminate weekly tension checks and costly track replacements with the IdealTrax™ system. Tracks are automatically tensioned when the engine is started and during operation.

IdealAccess™



FOLD-UP DOOR

This patented new design provides cab-to-canopy versatility, all while maintaining low clearance and a Level II FOPS certification.



TIER IV YANMAR DIESEL ENGINES

	POWER	TORQUE
1750RT NXT3	69.9 hp (52.1 kW)	242.7 Nm
2100RT NXT3	72 hp (53.7 kW)	279.3 Nm

RATED OPERATING CAPACITY

1750RT NXT3	794 kg
2100RT NXT3	953 kg





DEDICATED, WELDED TRACK LOADER CHASSIS

Custom built to aid in superior weight distribution, which enhances stability, grading, tractive effort, and ride control.



COUNTERWEIGHT/BUMPER

Gain extra tipping capacity while offering increased rear protection.

Optional on the 1750RT NXT3 and 2100RT NXT3.

GROUND CLEARANCE CLASS-LEADING

1750RT NXT3	343 mm
2100RT NXT3	335 mm

HORSEPOWER MANAGEMENT SYSTEM

Monitors and adjusts the hydrostatic drive pump to produce the ideal tractive effort.

LIFT HEIGHT CLASS-LEADING

1750RT NXT3	3251 mm
2100RT NXT3	3251 mm



OPTIMIZED RADIAL LIFT ARM

Durable design provides increased strength and up to 3251 mm of lift height – higher than any competitor in their respective weight class.

STRAIGHT TRACKING

This feature provides for in-cab, tool-free adjustment of individual track speeds, ensuring the machine drives straight.



OPERATOR STATION

▲ **COMFORT** and ▲ **SAFETY**

OPERATOR STATION COMFORT FEATURES



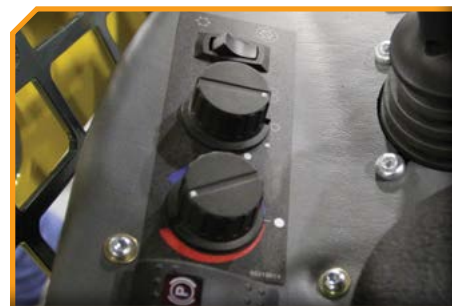
WITHIN REACH

Lights, windshield wiper, and all other controls conveniently located on the armrests.



RADIO OPTION

Factory-installed, this AM/FM deluxe radio option customizes the cab.



CLIMATE CONTROL

Heat is standard on all cab models. Upgrade to air conditioning for additional comfort.



INTEGRATED LCD DISPLAY

Easy-to-use, multi-function display incorporates all warning/operation lights and machine configuration screens. Single button allows for simple scrolling and selection of various display functions.

STRAIGHT TRACKING

Tracking is easily corrected from the cab using the display. It can also be used to compensate for offset or side-loaded attachments.

DRIVE SENSITIVITY ADJUSTMENT

Five settings are available to adjust the operator drive speeds and response times. Each user can customize the control to their preference using the LCD display.



Drive Sensitivity Adjustment	Operator Feel Emulation
5 - Rabbit	+ 20% = Fastest <ul style="list-style-type: none">Highly ResponsiveHighest Volume
4 - ●	+ 10% = Quick <ul style="list-style-type: none">Very ResponsiveControl
3 - ●	Standard Setting <ul style="list-style-type: none">Normal Response TimeFocused Productivity
2 - ●	- 10% = Precision <ul style="list-style-type: none">Improved Control
1 - Turtle	- 20% = High Precision <ul style="list-style-type: none">Easy ControlMore Precise





ELECTRIC ATTACHMENT CONTROL

This factory-installed option controls multi-function attachments directly through the joystick.

PREMIUM SEAT

Standard deluxe, high-back mechanical suspension seat or an optional air-ride seat for operator comfort.

OPERATOR PRESENCE

Brakes are applied and hydraulics are disabled whenever the operator raises the restraint bar, leaves the seat or switches off the ignition.

CREATURE COMFORTS

Dome light, cup holder, two 12-volt outlets, and multiple adjustable air vents.

VISIBILITY

A cab-forward design enhances the view to the bucket cutting edge from the operator's seat. Extra-large side screens, combined with a low-profile lift arm design, provide a wide field-of-view to the side work areas.

PRESSURIZED CAB

Optional, pressurized sealed cab enclosure with sound reduction material and large, rear-mounted cabin air filter provides a cleaner and quieter operating environment.

ARMRESTS/RESTRAINT BARS

All instrumentation and fully adjustable joystick control towers are conveniently located on the armrests for easy access. High-mounted restraint bars provide ample clearance for the operator's legs.

SERVICE & SAFETY

▲ MAINTENANCE and ▲ SAFETY



EXCELLENT VISIBILITY

FRONT



LEFT SIDE



REAR



RIGHT SIDE

EXCELLENT VIEWS FROM ALL SIDES FOR SAFETY AND PRECISE OPERATION

Excellent visibility to the front, sides and rear of the machine allow for precise placement of loads and reduced jobsite incidents. A high-mounted seat provides an excellent vantage point to the attachment and cutting edge.



LESS DOWNTIME PUTS MONEY IN YOUR POCKET

IDEALTRAX™ INDUSTRY-EXCLUSIVE AUTOMATIC TRACK TENSIONING SYSTEM

Eliminates the need for manually tensioning the tracks on the loader before operation, saving valuable time on the jobsite.

Increases the life of the tracks (up to 15%* in tested conditions), sprockets and bearings by ensuring the proper tension immediately upon start-up and during use, and tension release when the machine is shut down.

Track changes in the field are facilitated with a simple switch in the rear compartment. Removing a track without the IdealTrax™ system can take up to one hour per track. With IdealTrax™, it takes just minutes.

*Track life improvement varies greatly depending on conditions, application and upkeep; results may vary.

IdealTrax™



ENGINE NOT RUNNING



ENGINE RUNNING

17-TOOTH SPROCKETS

17-tooth, forged drive sprockets have 40% more hardness depth for improved sprocket life. Larger sprockets increase track-to-chassis clearance, so tracks can be cleaned out with ease.



ENGINE ACCESS

Full access to filters and reservoirs for servicing and maintenance is made possible by a swing-out rear door and a large, lockable engine cover.

TILTABLE ROPS/FOPS ASSEMBLY

Featuring gas-spring assist for easy internal access to the pumps, hydraulic valve bank and drive motors.

SAFETY RESTRAINT

Innovative restraint allows for secure positioning of the cab in the maintenance position. Restraint can be secured in position by one person.

TILT-OUT FOOT POD

This feature allows for best-in-class foot well cleanout and provides perfect access to the fuel tank and other components under the cab.

MUSTANG®

CUSTOMIZE YOUR RIDE.

Mustang offers a variety of accessories and upgrades that can be easily added to new or used equipment. These can help enhance an existing unit or customize one for a particular job. Whether you are looking to add a counterweight, boost your hydraulics, or enclose a cab to add heat and air conditioning, Mustang has the options you need to craft your ideal ride.

TRACK OPTIONS



CAB ENCLOSURES



HYDRAGLIDE™



CONTROLS (RT165)



SWITCHABLE SELF-LEVEL



RADIO



AIR CONDITIONING



HIGH-FLOW HYDRAULICS



POWER-A-TACH®



REAR VIEW CAMERA



COUNTERWEIGHT



FOLD-UP DOOR



not available on 1650RT

PROTECT YOUR INVESTMENT.

Trust the experts.
Make the *right* choice.

You expect year-to-year productivity from your Mustang equipment. That's why your trained and accredited Mustang dealer offers you the experience and skill necessary to maximize your equipment's performance. From routine maintenance to XPRT Genuine Parts to XPRT Protection Plan, your Mustang dealer is a partner you can count on to keep your equipment running smoothly.



XPRT
GENUINE PARTS

ROUTINE Maintenance



Eliminate unexpected repair costs and take better care of your Mustang equipment with the XPRT Protection Plan®. It ensures repairs will be made quickly with manufacturer-approved XPRT genuine parts by trained mechanics. If you're interested in saving money over the long haul, the XPRT Protection Plan® is an investment you should consider.

Features include:

- Affordable options available to meet your needs
- Select either powertrain component or full machine coverage for the right kind of protection for your equipment
- You decide the number of years and hours of coverage needed
- Enroll in the Plan on the day you purchase eligible equipment, or any time within six months or 500 hours from equipment registration

XPRT
PROTECTION PLAN

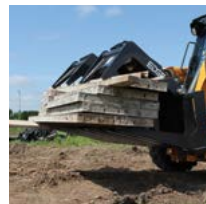
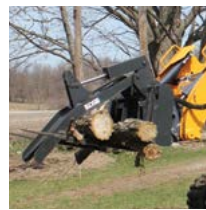
MUSTANG

MARKETS & ATTACHMENTS

▲ ATTACHMENTS

NEED VERSATILITY?

Compatible with most allied loader attachments, the RT Series Track Loaders from Mustang provide superior loader functionality while minimizing damage to ground surfaces. Perfect for landscape, agriculture, construction or rental - these machines are up for any challenge.



BEST SELLERS

▲ Available accessories

				1650RT	1750RT NXT3	2100RT NXT3
FORKS	PALLET FORKS	Acronym	Width (mm)	Capacity		
		CAT 1210 / 1200	1212	193 kg	▲	▲
CONSTRUCTION	STANDARD BUCKET* **					
		BS 1680 / 670	1680	670 l	▲	
		BS 1760 / 700	1760	700 l	▲	
		BS 1850 / 740	1850	740 l	▲	▲
		BS 2140 / 870	2140	870 l		▲
	4 IN 1 BUCKET* **					
		B4x1 1680 / 790	1680	790 l	▲	
		B4x1 1760 / 830	1760	830 l	▲	
		B4x1 1850 / 870	1850	870 l	▲	▲
		B4x1 2140 / 1020	2140	1020 l		▲
	DOZER BLADE					
		BLD 1980	1980	270 kg	▲	
		BLD 2135	2135	345 kg		▲
	UTILITY BUCKET*					
		BU 1680 / 790	1680	790 l	▲	
		BU 1760 / 830	1760	830 l	▲	
		BU 1850 / 870	1850	870 l	▲	▲
		BU 2140 / 1020	2140	1020 l		▲
INDUSTRY	INDUSTRIAL GRAPPLE BUCKET*					
		BGI 1680 / 500	1680	500 l	▲	
		BGI 1850 / 550	1850	550 l	▲	▲
		BGI 2140 / 630	2140	630 l		▲
	HD DEMOLITION & SHIP TRIMMING BUCKET*					
		BD 1680 / 420	1680	420 l	▲	
		BD 1760 / 530	1760	530 l	▲	
		BD 1850 / 590	1850	590 l	▲	▲
		BD 2140 / 870	2140	870 l		▲
MUNICIPALITIES	SNOW BLADE					
		BLS 2100	2100	350 kg	▲	
		BLS 2400	2400	410 kg		▲
	SNOW BLOWER					
		SBL 1800	1210	480 kg	High flow	High flow
		SBL 2100	1210	540 kg		High flow
	BROOM BUCKET					
		SCB 1680	1680		▲	
AGRICULTURE	LIGHT MATERIAL BUCKET*					
		BLM 1850 / 1100	1850	1100 l	▲	
		BLM 2350 / 1370	2350	1370 l		▲
	FARM FORKS WITH GRAPPLE					
		FMG 1680 / 600	1680	600 l	▲	
		FMG 1760 / 620	1760	620 l	▲	
		FMG 1850 / 640	1850	660 l	▲	▲
		FMG 2140 / 760	2140	760 l		▲

* 400HB cutting edge standard ** bolted teeth option



GET ATTACHED



MULTI-TACH®

All models feature the easy-to-use All-Tach® (universal-style) attachment mounting system compatible with most allied attachments.

- **SINGLE LEVER DESIGN**
for simplicity and strength.
- **HEAVY DUTY MOUNTING PLATE**
design for increased rigidity over tube style.



POWER-A-TACH®

Power-A-Tach® all-weather system option allows users to quickly install and remove attachments. An operator leaves the seat only to connect auxiliary hydraulics. This system is compatible with most allied attachments.



○ STANDARD ● OPTIONAL

	1650RT	1750RT NXT3	2100RT NXT3
PERFORMANCE			
All-Tach® Mounting System	○	○	○
IdealTrax™ Automatic Track Tensioning System	○	○	○
Straight Tracking		○	○
Power-A-Tach® Mounting System	●	●	●
Self-Leveling Hydraulic Lift Action		○	○
Selectable Self-Leveling Lift Action	●	●	●
Two-speed Hydrostatic Drive System	○	○	○
Horsepower Management System		○	○
ENGINE			
Engine Alert System with Error Display	○	○	○
Engine Automatic Shutdown System	○	○	○
Glowplugs Starter Assist	○	○	○
Dual-Element Air Cleaner with Indicator	○	○	○
HYDRAULICS			
Auxiliary Hydraulics	○	○	○
High-Flow Auxiliary Hydraulics	●	●	●
UNDERCARRIAGE			
Elevated Planetary Final Drives	○	○	○
Maintenance Free Rollers Each Side	3	3	4
Single Flange Front/Dual Flange Rear Idlers	○	○	○
Rubber Track Undercarriage System	○	○	○
Servo-Controlled Hydrostatic Drive	○	○	○
Dedicated Undercarriage		○	○
STRUCTURE			
Tilt-out Foot Pod		○	○
Back-up Alarm	●	○	○
Combination Radiator & Hydraulic Oil Cooler	○	○	○
ROPS/FOPS Level II Overhead Guard	○	○	○
Anti-Vandalism Lock Provisions	○	○	○
Mechanical Lift Cylinder Lock	○	○	○
OPERATOR STATION			
Pressurized Cab Enclosure with A/C	●	●	●
Fold-Up Door or Swing Out Door		●	●
Multi-Function Function Display Screen	○	○	○
Drive Sensitivity Adjustment		○	○
Electronic Attachment Control - 14-Pin Connector	●	●	●
Electro-Hydraulic Joystick Controls		○	○
Selectable Control Pattern Configuration (ISO / Dual-Hand)		●	●
Variable Speed Control, Selectable On & Off		●	●
Foot Throttle	○	○	○
Full-Suspension Seat	○	○	○
Air Suspension Seat	●	●	●

SPECIFICATIONS

track loaders - RT SERIES

		1650RT	1750RT NXT3	2100RT NXT3
DIMENSIONS	A. Overall Operating Height – Fully Raised (mm)	4008	4267	4267
	B. Height to Hinge Pin – Fully Raised (mm)	3038	3251	3251
	C. Reach – Fully Raised (mm)	641	876	876
	D. Dump Angle – Fully Raised	39°	40.2°	39°
	E. Dump Height – Fully Raised (mm)	2329	2489	2489
	F. Maximum Rollback Angle – Fully Raised	98°	102.5°	102.5°
	G. Overall Height at ROPS (mm)	1969	2103	2111
	H. Overall Length w/ Bucket – Std. c-wt. (mm)	3205	3658	3762
	I. Overall Length w/o Bucket – Std. c-wt. (mm)	2393	2814	2959
	J. Specified Height (mm)	1638	1715	1720
	K. Reach at Specified Height (mm)	559	790	795
	L. Dump Angle at Specified Height	73°	75°	75°
	M. Maximum Rollback Angle at Ground	28°	30°	30°
	N. Carry Position (mm)	198	208	208
	O. Maximum Rollback Angle at Carry Position	28°	31.6°	31.6°
	P. Digging Position – Below Ground (mm)	53	23	16
	Q. Angle of Departure with Std. c-wt.	28°	30.4°	29.2°
	R. Ground Clearance (mm)	184	333	335
	S. Track Gauge (mm)	1356	1313	1313
	T. Track Shoe Width (mm)	320	320	450
CAPACITY	U. Crawler Base (mm)	1265	1392	1483
	V. Overall Width – Less Bucket (mm)	1676	1636	1765
	W. Bucket Width (mm)	1676	1674	1877
	X. Clearance Radius – Front With Bucket (mm)	1979	2322	2403
	Z. Clearance Radius – Rear w/ Std. c-wt. (mm)	1440	1577	1641
ENGINE	Maximum Rollback at Specified Height	68.6°	66.8°	66.8°
	Angle of Approach	90°	90°	90°
	Grouser Height (mm)	25	25	25
	Operating Capacity at 35% Tipping Load (kg)	748	794	953
	Operating Capacity at 50% Tipping Load (kg)	1069	1134	1361
TRACK DRIVES	Tipping Load (kg)	2139	2268	2722
	Operating Weight (kg)	3693	3903	4445
	Make/Model	Yanmar/4TNV98C-NMS Tier IV	Yanmar / 4TNV98C-NMSL Tier IV	Yanmar / 4TNV98CT-NMSL Tier IV
	Type	4-Stroke Naturally Aspirated	4-Stroke Naturally Aspirated	4-Stroke Turbo
	Displacement (L) / cylinders	3.319 / 4	3.3 / 4	3.3 / 4
FORCES	Gross Power (kW) @ rpm	69.9 hp (52.1) @ 2500	69.9 hp (52.1) @ 2500	72 hp (53.7) @ 2500
	Net Power (kW) @ rpm	68.4 hp (51) @ 2500	68.4 hp (51) @ 2500	70.7 hp (52.7) @ 2500
	Peak Torque (Nm) @ rpm	241 @ 1625	242.7 @ 1600	279.3 @ 1700
	Oil Pan Capacity (L)	10.4	10.4	10.4
	Alternator Voltage / Amperage	14V / 100A	14V / 95A	14V / 95A
VOLUME	Drawbar Pull / Tractive Effort (kg)	4345	4498	5211
	Track Type / Track Rollers / Roller Type	Rubber / 3 / Steel	Rubber / 4 / Steel	Rubber / 5 / Steel
	Track Width (mm)	320	320	450
	Ground Pressure (bar)	0.45	0.43	0.32
	Bucket Breakout – Tilt Cylinder (kg)	1919	2429	3008
HYDRAULICS	Bucket Breakout – Lift Cylinder (kg)	2295	2275	2940
	Ground Speed – Single Speed (km/hr)	10.5	8.5	9.8
	Ground Speed – Two Speed (km/hr)	16.1	12.4	14.3
	Fuel Tank (L)	62.5	91	91
	Hydraulic Reservoir Tank (L)	41.6	41.6	52.2
SOUND/ VIBRATION*	Coolant Capacity (L)	14.4	13.3	14.4
	Auxiliary Hydraulic Flow – Rated Speed (L/min)	71*	70	83
	Auxiliary Hydraulics pressure – Standard (bar)	224	207	207
	High-Flow Hydraulic Flow – Rated Speed (L/min)	121*	129	136
	High-Flow Auxiliary Hydraulics pressure – (bar)	200	200	200
	Transmission Pump Type	Axial Piston	Axial Piston	Axial Piston
	Motor Type	Radial Piston	Axial Piston with Planetary Gear Box Reduction	
	Noise Level / Environmental Level (EU Dir. 00/14/EC)	101.4 dB(A)	103 dB(A)	103 dB(A)
	Operator Ear (EU Dir. 2006/42/EC)	N/A	82 dB(A)	83 dB(A)
	Whole-Body Vibration (ISO 2631-1)	1.1 m/s² / 0.55 m/s²	< 0.74 m/s²	< 0.79 m/s²
	Hand-Arm Vibration (ISO 5349-1)	1.7 m/s² / .85 m/s²*	< 3.5 m/s²	< 4.4 m/s²
	Battery Volts	12V	12V	12V
	Cold Cranking Amps at Temperature	950 CCA @ 0°F (-18°C)	850 CCA @ 0°F (-18°C)	850 CCA @ 0°F (-18°C)

ORIGINAL WORKHORSE

Mustang authorized dealers offer a full line of compact equipment, backed up by exceptional sales, service and parts experience.

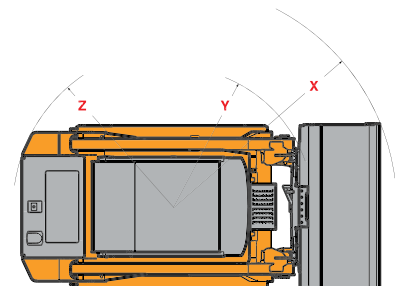
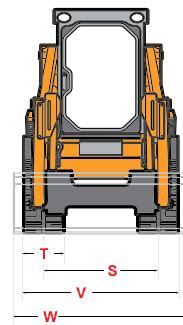
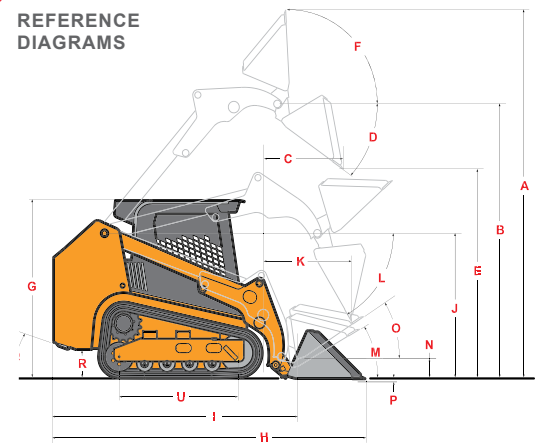
Mustang reminds users to read and understand the operator's manual before operating any equipment. Also, make sure all safety devices and shields are in place and functioning properly.

Mustang reserves the right to add improvements or make changes in specifications at any time without notice or obligation.

For more information on
Mustang equipment, visit

eu.mustangmfg.com

REFERENCE DIAGRAMS



MUSTANG